

CRAIG®

2GB DIGITAL MP3 AUDIO PLAYER

OWNER'S MANUAL

PLEASE READ BEFORE OPERATING THIS EQUIPMENT

Model: CMP611E

IMPORTANT SAFETY INSTRUCTION

Before using the unit, be sure to read all operating instructions carefully. Please note that these are general precautions and may not pertain to your unit. For example, this unit may not have the capability to be connected to an outdoor antenna.

- 1) Read these instructions.
All the safety and operating instructions should be read before the product is operated.
- 2) Keep these instructions.
The safety and operating instructions should be retained for future reference.
- 3) Heed all warnings.
All warnings on the product and in the operating instructions should be adhered to.
- 4) Follow all instructions.
All operating and use instructions should be followed.
- 5) Do not use this apparatus near water.
Do not use this product near water and moisture, for example : near a bathtub, washbowl, kitchen sink or laundry tub; in a wet basement; or near a swimming pool.
- 6) Clean only with dry cloth.
Unplug this product from the wall outlet before cleaning. Do not use liquid cleaners or aerosol cleaners. Use a dry cloth for cleaning.
- 7) Do not block any ventilation openings.
Install in accordance with the manufacturer's instructions.
Slots and openings in the cabinet and in the back or bottom are provided for ventilation, to ensure reliable operation of the product and to protect it from overheating. These openings must not be blocked or covered. The openings should never be blocked by placing the product on a bed, sofa, rug or other similar surface. This product should never be placed near or over a radiator or

heat source. This product should not be placed in a built-in installation such as a bookcase or rack unless proper ventilation is provided or the manufacturer's instructions have been adhered to.

- 8) Do not install near any heat sources such as radiators, heat registers, stoves, or other apparatus (including amplifiers) that produce heat.
- 9) Do not defeat the safety purpose of the polarized or grounding-type plug. A polarized plug has two blades with one wider than the other. A grounding type plug has two blades and a third grounding prong. The wide blade or the third prong are provided for your safety. If the provided plug does not fit into your outlet, consult an electrician for replacement of the obsolete outlet.
- 10) Protect the power cord from being walked on or pinched particularly at plugs, convenience receptacles, and the point where they exit from the apparatus.
- 11) Only use attachments/accessories specified by the manufacturer.
- 12) Use only with the cart, stand, tripod, bracket, or table specified by the manufacturer, or sold with the apparatus. When a cart is used, use caution when moving the cart/apparatus combination to avoid injury from tip-over.
An appliance and cart combination should be moved with care. Quick Stops, excessive force and uneven surfaces may cause the appliance and cart combination to overturn.

PORTABLE CART WARNING
(symbol provided by IETAC)



53126A

IMPORTANT SAFETY INSTRUCTION

- 13) Unplug this apparatus during lightning storms or when unused for long periods of time.

To protect your product from a lightning storm, or when it is left unattended and unused for long periods of time, unplug it from the wall outlet and disconnect the antenna or cable system. This will prevent damage to the product due to lighting and power-line surges.

- 14) Refer all servicing to qualified service personnel. Servicing is required when the apparatus has been damaged in any way, such as power-supply cord or plug is damaged, liquid has been spilled or objects have fallen into the apparatus, the apparatus has been exposed to rain or moisture does not operate normally, or has been dropped.

- 15) Power source

This product should be operated only from the type of power source indicated on the marking label. If you are not sure of the type of power supply to your home, consult your appliance dealer or local power company. For products intended to operate from battery power, or other source, refer to the operation instructions.

- 16) Power lines

An outside antenna system should not be located in the vicinity of overhead power lines or other electric light or power circuits, or where it can fall into such power lines or circuits. When installing an outside antenna system, extreme care should be taken to keep from touching such power line or circuits as contact with them might be fatal.

- 17) Overloading

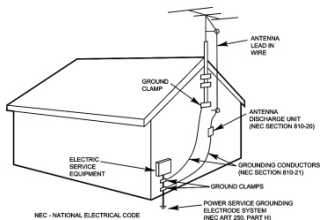
Do not overload wall outlets and extension cords as this can result in a risk of fire or electric shock.

- 18) Object and liquid entry

Never push objects of any kind into this product through openings as they may touch dangerous voltage points or short out parts that could result in fire or electric shock. Never spill or spray any type of liquid on the product.

- 19) Outdoor antenna grounding

If an outside antenna is connected to the product, be sure the antenna system is grounded so as to provide some protection against voltage surges and built up static charges. Section 810 of the National Electric Code ANSI/NFPA 70 provides information with respect to proper to grounding of the mast and supporting structure, grounding of the lead-in wire to an antenna discharge product, size of grounding conductors, location of antenna discharge product, connection to grounding electrodes and requirements for the grounding electrodes.



52898A

IMPORTANT SAFETY INSTRUCTION

- 20) **Service**
Do not attempt to service this product yourself as opening or removing covers may expose you to dangerous voltage or other hazards, Refer all servicing to qualified service personnel.
- 21) **Replacement parts**
When replacement parts are required, be sure the service technician uses replacement parts specified by the manufacturer or those that have the same characteristics as the original parts. Unauthorized substitutions may result in fire or electric shock or other hazards.
- 22) **Safety check**
Upon completion of any service or repairs to this product, ask the service technician to perform safety checks to determine that the product is in proper operation condition.
- 23) **Wall or ceiling mounting**
The product should be mounted to a wall or ceiling only as recommended by the manufacturer.
- 24) **Damage requiring service**
Unplug this product from the wall outlet and refer service to qualified service personnel under the following conditions.
 - a) When the power-supply cord or plug is damaged.
 - b) If liquid has been spilled or objects have fallen into the product.
 - c) If the product has been exposed to rain or water
 - d) If the product does not operate normally by following the operating instructions. Adjust only those controls that are covered by the operating instructions, as an adjustment of other controls may result in damage and will and require extensive work by a qualified technician to restore in the product to its normal operation
 - e) If the product has been dropped or the cabinet has been damaged.
 - f) When the product exhibits a distinct change in performance-this indicates a need for service.
- 25) **Note to CATV system installer**
This reminder is provided to call the CATV system installer's attention to Article 820-40 of the NEC that provides guidelines for proper grounding and, in particular, specifies that the cable ground shall be connected to the grounding system of the building, as close to the point of cable entry as practical.

PRECAUTIONS

COPYRIGHT

Distributing copies of MP3 or WMA tracks without permission is a violation of international copyright laws.

SAFETY:

- Vibration experienced during walking or exercising will not affect the player. However, dropping the player or dropping a heavy object on the player may result in damage or sound distortion.
- Avoid spilling any liquid onto or into the player.
- Do not leave the player in a location near heat sources; in a location subject to direct sunlight, excessive dust, sand, moisture, rain or mechanical shock; on an unlevel surface; or in a car with the windows closed during periods of excessive heat.

ROAD SAFETY:

Do not use headphones while driving, cycling or operating any motorized vehicle. It may create a traffic hazard and it is illegal in some areas. It can be potentially dangerous to play your headset at a high volume while walking, especially at pedestrian crossing. You should exercise extreme caution or discontinue use in potentially hazardous situations.

FCC WARNING:

This equipment has been tested and found to comply with the limits for a Class B digital device, pursuant to Part 15 of the FCC Rules. These limits are designed to provide reasonable protection against harmful interference in a residential installation. This equipment generates, uses and can radiate radio frequency energy and, if not installed and used in a accordance with the instructions, may cause harmful interference to radio communications. However, there is no guarantee that interference will not occur in a particular installation. If this equipment does cause harmful interference to radio or television reception, which can be determined by turning the equipment off and on, the user is encouraged to try to correct the interference by one or more of the following measures:

- Reorient or relocate the receiving antenna.
- Increase the separation between the equipment and receiver.
- Connect the equipment into an outlet on a circuit different from that to which the receiver is connected.
- Consult the dealer or an experienced radio/TV technician for help.

This device complies with Part 15 of the FCC Rules. Operation is subject to the following two conditions:

- This device may not cause harmful interference, and
- This device must accept any interference received, including interference that may cause undesired operation.

Modification not authorized by the manufacturer may void user's authority to operate this device.

Dear Customer:

Selecting fine audio equipment such as the unit you've just purchased is only the start of your musical enjoyment. Now it's time to consider how you can maximize the fun and excitement your equipment offers. This manufacturer and the Electronic Industries Association's Consumer Electronics Group want you to get the most out of your equipment by playing it at a safe level. One that lets the sound come through loud and clear without annoying blaring or distortion and, most importantly, without affecting your sensitive hearing.

Sound can be deceiving. Over time your hearing "comfort level" adapts to higher volumes of sound. So what sounds "normal" can actually be loud and harmful to your hearing. Guard against this by setting your equipment at a safe level BEFORE your hearing adapts.

To establish a safe level:

- Start your volume control at a low setting.
- Slowly increases the sound until you can hear it comfortably and clearly, and without distortion.

Once you have established a comfortable sound level:

- Set the dial and leave it there.

Taking a minute to do this now will help to prevent hearing damage or loss in the future. After all, we want you listening for lifetime.

We Want You Listening For A Lifetime:

Use wisely, your new sound equipment will provide a lifetime of fun and enjoyment. Since hearing damage from loud noise is often undetectable until it is too late, this manufacturer and the Electronic Industries Association's Consumer Electronic Group recommend you avoid prolonged exposure to excessive noise. This list of sound levels is included for your protection.

Decibel

Level	Example
30	Quiet library, soft whispers
40	Living room, refrigerators, bedroom away from traffic
50	Light traffic, normal conversation, quiet office
60	Air conditioner at 20 feet, sewing machine
70	Vacuum cleaner, hair dryer, noisy restaurant
80	Average city traffic, garbage disposals, alarm clock at two feet

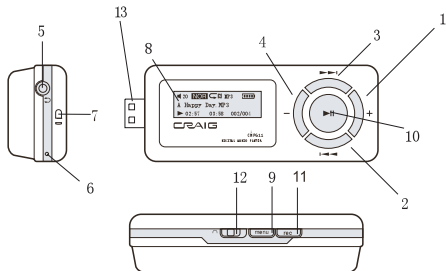
THE FOLLOWING NOISES CAN BE DANGEROUS UNDER CONSTANT EXPOSURE:

90	Subway, motorcycle, truck traffic, lawn mower
100	Garbage truck, chain saw, pneumatic drill
120	Rock band concert in front of speakers, thunderclap
140	Gunshot blast, jet engine
180	Rocket launching pad

Information courtesy of the Deafness Research Foundation.

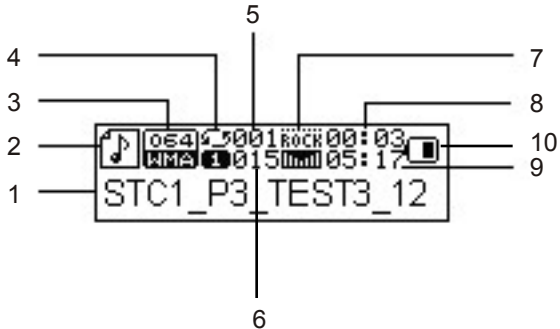


LOCATION OF CONTROLS



- | | |
|---------------------------|----------------------------------|
| 1. + (Volume Up) Button | 5. 🎧 (Phones) Jack |
| 2. ⏮ Button | 6. MIC (Microphone) |
| 3. ⏭ Button | 7. Hanging hole |
| 4. - (Volume Down) Button | 8. LCD Display |
| 5. 🎧 (Phones) Jack | 9. MENU Button |
| 6. MIC (Microphone) | 10. Play / pause / stop ⏸ Button |
| 7. Hanging hole | 11. REC Button |
| | 12. HOLD Switch |
| | 13. USB Plug |

DISPLAY OVERVIEW



- | | |
|---|----------------------------------|
| 1. Current Song's Name and informations | 5. Current Track Number |
| 2. Lyric Indicator | 6. Total Numbers of Tracks |
| 3. Format and bitrate of Current Track | 7. EQ Mode |
| 4. Repeat Mode | 8. Elapsed Time of Current Track |
| | 9. Total Time of Current Track |
| | 10. Battery Meter |

BATTERY INSTALLATION

Install or replace the battery when the battery indicator is low (see figures at right) as follows:

1. Open the battery door on the rear of the unit.



Battery full

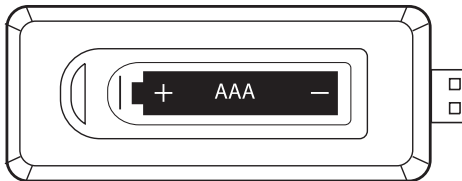


Battery low

2. Insert one AAA alkaline battery (not included) as the figure below and the polarity markings inside battery compartment

3. Replaced the battery door.

NOTE: Alkaline batteries are recommended for longest playing time.



Complete the battery replacement within two minutes, keep the player loaded with battery even time when power off. Otherwise, DRM music will lost the security data and stop playing. Upon synchronization, your music will play again.

BATTERY PRECAUTIONS

Follow these precautions when using a battery in this device:

1. Use only the size and type of battery specified.
2. Be sure to follow the correct polarity when installing the battery as indicated. As reversed batteries may cause damage to the device.
3. Do not mix different types of batteries together (e.g. Alkaline and Carbon-zinc) or old batteries with fresh ones.
4. If the batteries in the device are consumed or the device is not to be used for a long period of time, remove the batteries to prevent damage or injury from possible battery leakage.
5. Do not try to recharge batteries not intended to be recharged; they can overheat and rupture. (Follow battery manufacturer's directions.)
6. Do not dispose of batteries in fire, batteries may explode or leak.

TRANSFERRING FILES

Before you getting start to playback music, you should transfer those files into the player as:

Download the normal music files into the player:

The player has two Online Device modes: MEDIA DEVICE and USB Disk, for normal files transferring, set the player in USB DISK mode as:

1. Press and hold the >|| button to power on the unit. Press and hold the Menu button, the setting menu will appear on the display.
2. Press ◀ or ▶ button repeatedly to select SYS (System setting menu), then press the the Menu button to enter.
3. Press ◀ or ▶ button repeatedly to select Online Device then press Menu button to enter.
4. Press ◀ or ▶ button repeatedly to select USB Disk from USB DISK and MEDIA DEVICE, press Menu button to confirmed the selection. Press and hold the Menu button to save the setting and exit.
5. Connect the player to the computer by the USB port on the unit.
6. Download the specific files into the player as download the files to others portable device. (Drag-and-drop the specific files from the computer to the player's folders show on the computer's screen)
7. After download, disconnect the unit from the computer.

NOTES:

1. All the download files in this setting will stored in the Root Directory in the player.
2. To avoid damaged the player. Make sure the player is in the power OFF mode when connect to the computer.

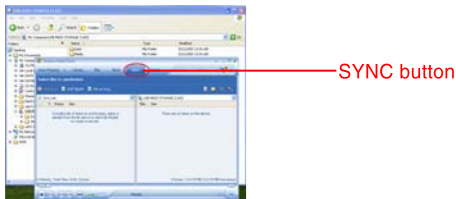
TRANSFERRING FILES (CONT.)

Download the DRM-WMA (Digital Rights Management-WMA, songs with copy right protective in WMA format) files into the player:

1. Set the Online Device mode to MEDIA DEVICE as above procedures.
2. Connect the player to the computer, the computer will detected the player and show:



3. Select and turn on the Windows Media Player in the computer and double click the SYNC button on the menu bar.



4. Drag-and-Drop the specific DRM songs into the sync list .

TRANSFERRING FILES (CONT.)

5. Double click the Start Sync button on the Windows Media Player to start synchronize the DRM songs into the player.
6. When finished, disconnect the player from the computer. (The operation procedures and the location of control buttons between Windows Media Player 10 and 11 are difference. For details, please refer to the instruction manual of Windows Media Player.)
7. In this setting, the DRM songs will stored in the Music Folder in the player.

IMPORTANT NOTE:

1. The DRM songs only can sync (synchronize) into the player through the Windows Media Player 10 or 11.
2. Only the Window XP and Vista or latest operation system of computer can installed the Windows Media Player 10 or 11.
3. Do NOT disconnect the player during files transferring. Otherwise, the DRM information in the player may corrupt, you cannot playback the DRM songs again. In this case, you should deleted all the DRM songs and information in the unit as:
 - 3.1 Set the Online Device mode to USB Disk mode. Connect the player to the computer, delete all **the files/folders in the** player.
 - 3.2 Disconnect the player from the computer. Set the Online Device mode back to MEDIA DEVICE mode. Connected the Player to the computer again. Synchronize the DRM songs to the player again as previously procedures.

Operation system of the computer

1. Windows Vista and XP: The player can perform all functions, DRM songs can be sync into the player.
2. Windows ME and 2000、Mac OS 10、Linux 2.4.2: DRM songs cannot sync into the player. Only the normal MP3, WMA files can be download into the player.
3. Windows 98: DRM songs cannot sync into the player. Before download the normal MP3, WMA files into the player, the **“WIN 98 DRIVER”** in the enclosed CD disc should be installed to the computer.

Install the WIN 98 Driver to the computer

1. Insert the supplied installation CD into the CD Drive in your computer; the List of Folders in the CD will appear on the computer's screen automatically.
2. Selected the **“WIN 98 DRIVER”** and enter.
3. Selected and double click “Msien.exe” and follow the on-screen instructions to install the software.



EARPHONE

Plug the supplied earphone to the Phone Jack on the unit.

HOLD SWITCH

Slide the Hold Switch to Hold position. All the button on the unit will not be functioning to avoid the buttons was be press during playback. To release the lock, slide the switch to opposite position.

LYRIC INDICATOR

During playback, if the Lyric indicator on the display is from () turn to (), it means the lyric of the current song is available. Press and hold the Menu button until

the correspondences lyric appear on the display. Press and release the Menu button again to exit.

BASIC OPERATION

1. Press and hold the ►|| button to power ON the unit. The information of current track will appear on the display. Press the button to start playback. Or,
2. If the setting Menu appear on the display when power on the unit. Press ◀◀ or ▶▶ button repeatedly to select MSC (Music) then press the Menu button to enter. The information of the current track will appear on the display. Press the ►|| button to start playback.
3. During playback, press the + or - button to adjust the volume as desire.
4. During playback, Press the ◀◀ or ▶▶ button repeatedly to skip the tracks.
5. During playback, Press and hold the ◀◀ or ▶▶ button to searching the specific section of track.
6. During playback, press the ►|| button to pause playback. Press again to resume normal playback.
7. When finished listening, press and hold the ►|| button until "Bye-Bye" appear on the display to power OFF the unit.

MAIN SETTINGS MENU

1. Press and hold the >|| button to power on the unit The main setting menu will appear on the display. Or,
2. If the display is showing others information. Press and hold the Menu button until the main setting menu appear on the display.
3. In the setting menu (or sub-menus), press the Menu button repeatedly to selected the specific functions, then press the Menu button to confirm the selection. After setting, press and hold the Menu button to save the settings and exit.
4. If MSC (Music) selected, press the Menu button to enter music playback mode, then press ►|| button to start playback.
5. If REC (Voice Recording) is selected, press the menu button to enter Voice recording Mode.
6. If RPL (Recording Play List) is selected, press the menu button to enter

Voice Recording Playback mode.

7. If SYS (System) is selected, press the menu button to enter setting menu mode.
In setting menu:
 - 7.1 If Backlight is selected, press the menu button to enter the setting menu.
press ◀ or ▶ button repeatedly to select the Backlight auto turn off period to 0 (Backlight will not turn ON) or 3-30 (seconds), then press and hold the menu button to save the setting and exit.
 - 7.2 If Language is selected, press the menu button to enter, press ◀ or ▶ button repeatedly to select the On Screen Display language as desire, then press and hold the menu button to save the setting and exit.
 - 7.3 If Power off is selected, press menu button to enter, press ◀ or ▶ button repeatedly to select Off Time or Sleep time. If Off time is select, press the menu button to enter, press ◀ or ▶ button repeatedly to set the auto power off time when the player is idle to 0 (The player will not auto power off); 10; 20; 30; 40; 50 or 60 (seconds), then press and hold the menu button to save the setting and exit. If Sleep time is select, press the menu button to enter to the setting menu, press ◀ or ▶ button repeatedly to set the sleep time from to 0 (Sleep timer will not functioning); 10 to 120 (minutes), press and hold the menu button to save the setting and exit.(NOTE: If Sleep timer had been set, the player will be auto power off when time is up.)
 - 7.4 If Contrast is selected, press the menu button to enter the setting menu, press ◀ or ▶ button to set the contrast level from 1-16 as desire, then press and hold the menu button to save the setting and exit.
 - 7.5 If Online Device is select, press the menu button to enter the setting menu, press ◀ or ▶ button repeatedly to select Media Device or USB Disk. Press and hold the menu button to save the setting and exit. (For details operations for Media Device and USB Disk, refer to the section TRANSFERRING FILES on page 10-13.)
 - 7.6 If Memory info (Memory information) is selected, press the menu button to read the status of internal memory. Press and hold the menu button to exit.
 - 7.7 If Firmware version is selected, press the menu button to read the information of

- the software inside the player. Press and hold the menu button to exit.
- 7.8 If DRM Time is selected, press the menu button to read the DRM time. Press and hold the menu button to exit. (The DRM time is for internal operation only, it is not the real time and can't be adjust by the user, it will be set or updated every time when you download the DRM songs through the Windows Media Player and computer to the player.)
- 7.9 If Exit is selected, press the the menu button to exit.

SETTINGS IN THE PLAYBACK MODE

Tracks selection/delete menu

In the music playback mode, before start playback or after press ►|| button to pause playback. Press and release the menu button to enter tracks selection/delete menu. Press the ◀ or ▶ button to select the desired function then press the menu button to enter:

1. If Local folder is selected, press ◀ or ▶ button repeatedly to select the specific folder in the list then press the menu button to enter (Repeat the same procedures until the specific song list appear on the display). Press ◀ or ▶ button repeatedly to select the specific track as desire then press the menu button to confirm the selection. The information of the selected track will appear on the display, press ►|| button to start playback.
2. If Deleted is selected, press the menu button to enter. "NO" will appear on the display, press ◀ or ▶ button to select "YES" (the current track will be deleted from the player) or "No" (return to previous menu) then press the menu button to confirme the selection. Repeat the same procedures until all the specific tracks were deleted.
3. If Delete all is selected, press the menu button to enter. "NO" will appear on the display, press ◀ or ▶ button to select "YES" (Deleted all the tracks in the player) or "NO" (Return to previous menu) then press the menu button to confirm the selection.
4. If Exit is select, press the menu button to return to previous menu.

Playback mode setting menu

During playback, press the menu button to enter Playback modes settings menu, Press the ◀ or ▶ button repeatedly to select the specific function then press menu button to enter:

1. If Repeat is select, press the menu button to enter. Press the ◀ or ▶ button repeatedly to select the repeat modes as desire as follows then press and hold the menu button to save the settings and exit :
Normal: Plays all the tracks in the player one by one and then stop.
Repeat One: Repeat to play the current track.
Folder: Play the tracks in the current folder one by one and then stop.
Repeat Folder: Repeat playback the tracks in the current folder.
Repeat All: Repeat to play all the tracks in the player.
Random: Playback the tracks in the current folder randomly.
Intro: Play the first 10 seconds of each tracks in the current folder.
2. If Equalizer is select, press the menu button to enter. Press the ◀ or ▶ button repeatedly to set the Equalizer modes to Natural; Rock; Pop; Classic; Soft; Jazz or DBB (Super Bass) as desire then press the menu button to save the setting and exit.
3. If SRS WOW mode is select, press the menu button to enter. Press the ◀ or ▶ button repeatedly to select WOW MODE then press the menu button to enter. Press the ◀ or ▶ button repeatedly to select SRS 3D, TruBass or Focus then press menu button to enter. Press ◀ or ▶ button repeatedly to set the SRS effect as desire. After setting, press and hold the menu button to save the setting and exit. To turn OFF the SRS effect, enter to the SRS WOW setting menu again. Press the ◀ or ▶ button to select Exit SRS, then press the menu button. The SRS effect will be turn OFF.
4. If Replay is select, press the menu button to enter. The letter "A" of A-B repeat on the display will be blinking. Press the ▶ button to select the start point of A-B repeat, press the ▶ button again to select the end of the A-B repeat. The selected section will be repeat playback and endless. To resume normal playback, press the menu button.

5. If Exit is select, press the menu button to return to previous menu.

Voice Recording

1. Enter to main setting menu as previously procedures.
2. Press the Rec button to start recording.
3. During recording, press the Rec button to pause. Press again to resume recording.
4. When finished, press and hold the Rec button until "Saving ..." appear on the display to save the recordings and exit.
5. Press the Rec button again for new recordings or press and hold the menu button resume to main setting menu.

Playback the Voice Recording Files

1. Enter to the main setting menu as previously procedures.
2. Press the ◀ or ▶ button to select RPL (Recording Play List) then press the menu button to enter. The information of current recording track will appear on the display.
3. Press the ▶|| button to stat playback. Others operations are same as music playback.

TROUBLESHOOTING GUIDE

If you experience a problem with this unit, check the chart below before calling for service.

The unit can't be power on	<ul style="list-style-type: none">• Replace the battery by a new battery.• Hold switch is in the hold position. Slide it to the opposite position to release the lock.• Press and hold the ►II button until the display turn on.
Music can't be playback	<ul style="list-style-type: none">• Files format incorrect. Transfer only WMA or MP3 music files to the player.• The time of internal DRM clock incorrect or the DRM songs corrupt. Deleted the tracks in the unit then Synchronize the DRM songs to the player through the Window Media Player 10 or 11 again.
No sound	<ul style="list-style-type: none">• Earphone not connected. Connects the earphone into the player's earphone jack firmly.• Earphone may damage. Try the others earphone.• Volume too low, rise the volume level by press the + button.• Current track may corrupt. Try others track.
Sound quality poor	<ul style="list-style-type: none">• Battery power low, replace a new battery.• Earphone damaged, try the others earphone.
PC does not detect the player / Download failure	<ul style="list-style-type: none">• The operation system of the computer is Win 98. Install the drive in the attached CD to the computer. The operation system of the computer is Win 95 the unit can't support. Used the other computer using Win 98 or latest versions.• USB cable not secured, connects USB cable properly.• Online Device modes wrong set. Set it as page 10.
Voice recording sound quality is bad	<ul style="list-style-type: none">• Point the builtin mic to the sound source, no barriers between the mic and the sound source.

SPECIFICATIONS

Built in Capacity

2GB (Due to some internal memory was used. Approximate 1.8 GB is free for music download.)

Power Source

1 x AAA/LR03/UM4 size 1.5V battery
(not included)

Audio frequency

20Hz~20KHz

Music format

MP3, WMA and DRM-WMA

(Digital Rights Management-WMA, songs with copy right protective in WMA format)

Support compress rate

32Kbps-256Kbps

Supporting OS

Mac OS10, Linux 2.4.2, Win 98, ME, 2000, XP and Vista

Mic recording format

WAV , 32 Kbps

Accessory:

Instruction Manual x 1

Earphone x 1

CD-ROM x 1

Specifications are subject to change without notice.

LIMITED WARRANTY

Craig warrants this product to be free from manufacturing defects in material and workmanship under normal use for a period of 90 days from date of purchase. If service is required, please return the product to the store where it was purchased for exchange; or, pack the unit in the original packing material with all accessories if applicable, a copy of your sales receipt and a Cashier's check or Money Order for \$10.00 (to cover shipping and handling costs) payable to Craig Electronics International Ltd. Ship your product freight pre-paid. Your unit will be repaired, replaced or a refund will be forwarded to you within four weeks of receipt of your unit. Please ship your unit to:

Craig Electronics International Ltd.
1160 NW 163 Drive
Miami, FL 33169

This warranty is void if the product has been: a) Used in a commercial application or rental. b) Damaged through misuse, negligence, or abuse. c) Modified or repaired by anyone other than an authorized Craig service center. d) Damaged because it is improperly connected to any other equipment.

Note: This warranty does not cover: a) Ordinary adjustments as outlined in the Owner's Manual which can be performed by the customer. b) Damage to equipment not properly connected to the product. c) Any cost incurred in shipping the product for repair.

LIMITED WARRANTY (CONTINUED)

d) Damage to the product not used in the USA.

This warranty is not transferable and only applies to the original purchase. Any implied warranties, including the warranty of merchantability, are limited in duration to the period of this expressed warranty and no warranty whether expressed or implied shall apply to the product thereafter.

Under no circumstance shall Craig be liable for any loss or consequential damage arising out of the use of this product. This warranty gives specific legal rights. However, you may have other rights which may vary from state to state. Some states do not allow limitations on implied warranties or exclusion of consequential damage. Therefore, these restrictions may not apply to you.

To Obtain Service on your Product
e-mail: service@craigelectronics.com